

ZENITH

DESIGN BY SUZUKI



ZENITH
Group

Zenith Group is a leading construction and property management company with 12 subsidiaries that provide comprehensive designs and construction solutions with high-end finishes. At Zenith, we offer an all-in-one construction solution with our diverse range of in-house development services. This guarantees efficiency and gives us a competitive edge in the GCC market.

OUR IN-HOUSE ACTIVITIES

We take pride in offering a range of services through our own employees, facilities, and equipment, all under Zenith Licenses. These services include

- ✓ Real estate development of vacation homes
- ✓ Architecture and interior
- ✓ Full in-house construction activities
- ✓ Art, and hand craft design services
- ✓ Customized Zenith decorative products
- ✓ Home automation & smart system by Zenith
- ✓ Property management & shortterm lease vacation home services



Zenith Property Development



Zenith Smart Contracting



Zenith MEP



Zenith Technical Services



Zenith Innovation



Zenith Vision



Zenith Digital Media



Zenith Architecture & Design



Zenith Expo



Zenith Facility Management



Zenith Aluminum & Glass



Zenith Procurement



Zenith Software Development



Zenith Home Automation



Zenith IT



Zenith Web Development



Zenith Lighting



Zenith Hotel & Resort



Zenith Interior



Zenith Art & Craft



Zenith Architecture



Zenith Vacation Home



Zenith Hospitality



Zenith Partners



Zenith Industries



Zenith Furniture



Zenith Technology

A scenic view of Mount Fuji, the highest mountain in Japan, under a clear blue sky with scattered white clouds. The mountain's peak is partially covered in snow, and its slopes are a mix of green and brown. In the foreground, a dense field of pink cherry blossoms is in full bloom. To the right, a traditional Japanese building with a red facade and a dark, curved roof is visible, partially obscured by the blossoms. The overall atmosphere is serene and beautiful.

REACH THE SUMMIT OF YOUR GOAL WITH SUZUKI INTERIOR



COLLABORATION WITH SUZUKI INTERIOR DESIGN

Zenith and Suzuki have recently formed a partnership to collaborate on the interior design of houses. This unique cooperation brings together Zenith's expertise in luxury craftsmanship and Suzuki's experience in innovative design. Together, they aim to revolutionize the way homes are designed and create exceptional living spaces. By combining Zenith's attention to detail and Suzuki's creative vision, they plan to offer homeowners unparalleled interior design solutions. This partnership seeks to integrate elements of precision and elegance from Zenith into the interior spaces, while incorporating Suzuki's sleek and modern design aesthetics.

JAPAN BRANCH

Shinjuku Front tower 28 F 2-21-1 Kita shinjuku Shinjuku Tokyo

TEL: +81 - 3 - 5937 - 5812 FAX: +81 - 3 - 5937 - 5813 Tokyo: 〒 169 - 0074

2F 2 - 13 - 25 Niizominami Toda-city Saitama

TEL: +81 - 3 - 6803 - 5140 FAX: +81 - 3 - 6690 - 6652 Saitama Branch : 〒 335 - 0026

63 - 1 Sankakucho Hanamigawa-ku Chiba-shi Chiba-ken

TEL: +81 - 3 - 6803 - 5140 FAX: +81 - 3 - 6690 - 6652 Chiba Branch : 〒 262 - 0011

1 - 3 - 7 Nakakonoikecho Higashiosaka-shi Osaka-fu

TEL: +81 - 6 - 4306 - 4211 FAX: +81 - 6 - 4306 - 4213 Osaka Branch : 〒 578 - 0975

2 - 7 - 41 Tsubamesawahigashi Miyagino-ku Sendai-shi Miyagi-ken

TEL: +81 - 22 - 290 - 7306 FAX: +81 - 22 - 290 - 7386 Sendai Branch: 〒 983 - 0822





KONNICHIIWA (こんにちは)

Experience the Grand opulence
at heart of DUBAI

- 20 MIN
Dubai International Airport (DXB)
- 20 MIN
Jumeirah Beach Residence
- 20 MIN
Dubai Mall/Burj Khalifa
- 5 MIN
Sheikh Zayed Road
- 10 MIN
Al Khail Road
- 20 MIN
Dubai Marina


LOCATION


Konnichiwa (こんにちは) is an impressive mixed-use community situated in Jumeirah Village Circle, a family-friendly neighborhood just off Al Khail Road in Dubai. The tower offers a convenient location, providing easy access to Dubai's major transportation hubs and popular attractions, such as Dubai Marina, Palm Jumeirah, Business Bay, Downtown and Dubai airports.





SPECIFICATION


Konnichiwa (こんにちは) is a mixed-use development with retail, podiums, and commercial floors. It features a Multi-Level Open Air Deck with a pool and play area, along with versatile commercial spaces. The 61 spacious residential apartments offer balconies and maid rooms. Strategically located near Al Khail Road, prestigious schools, and a community park. **Konnichiwa** is a highly valuable property.


 24 Hr. Security


 Parking


 Smart system


 Shuttle service


 online service

 Business hub

 Carwash

 24 Hr. Maintenance service

 Rent car

 Easy access to high way



KONNICHIWA IS A GREEN BUILDING THAT UTILIZES ENERGY CYCLING AND GROWTH -ORIENTED ARCHITECTURE FOR THE PURPOSE OF PRESERVING AND SUPPORTING THE ENVIRONMENT

- Double Glazed Windows

Double-glazed windows provide enhanced insulation by preventing the penetration of cold, heat, and sound which, resulting an improved energy efficiency and a quieter, more comfortable living environment.

- Gray water

Gray water is utilized for watering the plants contributing to water conservation and sustainability .

- Silent Pipes

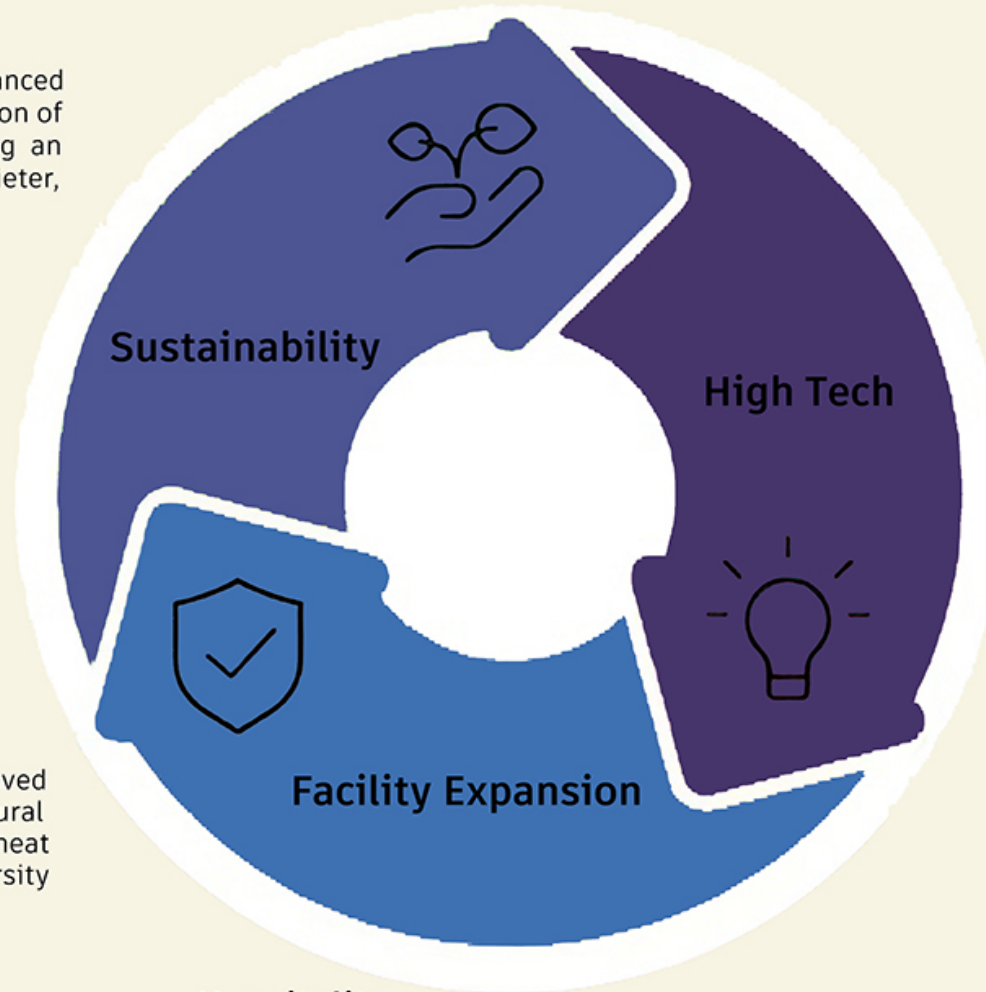
Using silent or insulated pipes in tower not only reduces the noise caused by water flow in the pipes.

- Green Roof

Green roofs offer benefits like improved energy efficiency by providing natural insulation and reducing the urban heat island effect while enhancing biodiversity and aesthetics in urban areas.

- LED Lighting

Energy-efficient lighting options to reduce electricity consumption.



- Hospitality

- Garbage Disposal

- Double-Decker Park Car

- Water Pressure Regulators

- Appliance with an A+ energy rating

- VRF System

The VRF systems prevent energy wastage through precise control over cooling and heating, leading to cost reduction and aiding in carbon emission reduction.

- Solar Panels

The use of solar panels in towers has significant impacts that are associated with the environment, economy, and energy sustainability. We use solar energy for illuminating the facade and outdoor areas of the tower, as well as for water heating.

- Air-To-water Technology

Atmospheric water generation enhances self-reliance, tapping into air moisture for water needs. This eco-friendly method bolsters water security and aligns with green construction principles.

- Door Lock

- Blind Control

- Sound System

- Lighting Control


- Smart Thermostat


- Home Automation


- Security Services (Optional)


Amenities




 Coffee shop


 Kids play area


 Swimming pool


 Kids swimming pool

 Sauna


 Bar


 Jacuzzi

 Leisure pool deck


 Gym


 Pet care

 Laundry

 Green area

 Tailoring

 Hospitality

 House maid

 Shop



Relax and unwind



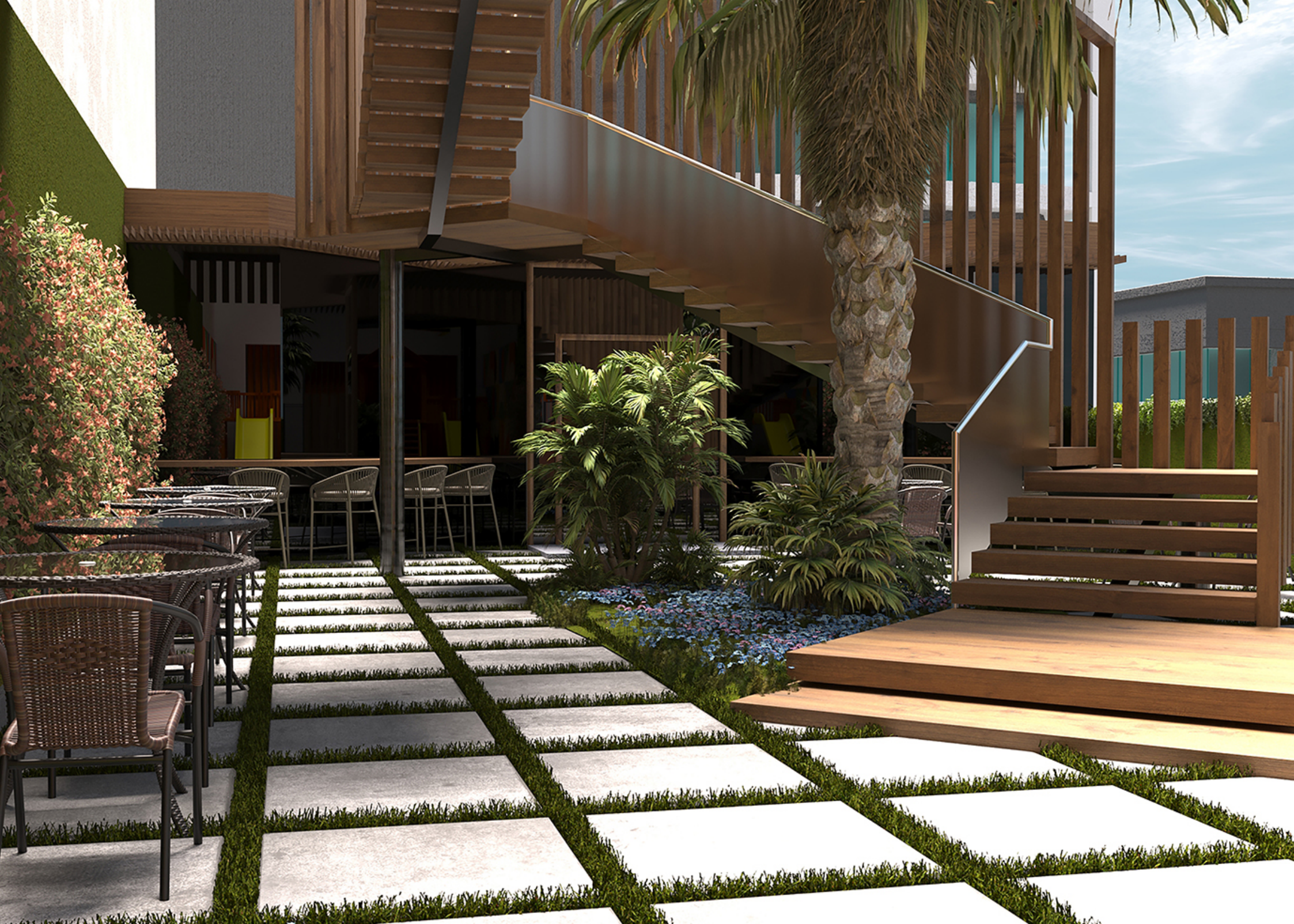


Good atmosphere

*Roof
Garden*



Relax and unwind in a beautiful outdoor with family and friends



Lobby



RECEPTION



*Residential
Entrance*



*Commercial
Entrance*



Interior Design



False ceiling with cove lighting

Modern chandelier

Wall moulding

Book match white calacatta marble with backlit

Hiding curtain border

Mirrored wall adorned with backlighting

Modern wall light

Veneer finished wood panel with gold strip

Double glazed windows

Wooden tv table

RAK Ceramic

Onyx floor with defuse LED light inside

wooden border





- False ceiling with cove lighting
- Calacatta marble with backlit
- Onyx flooring with LED light inside
- Mirrored wall adorned with backlighting
- Wall moulding





- Soft foamed headboard in red velvet finish
- Wall mounted dresser & with round mirror copper color edge





- Soft foamed headboard in green velvet finish
- Stone flooring
- Bronze mirrored wall



studio

study room





- Stone flooring
- Wall cladding
- Perfect harmony of functionality
- Veneer wood that exudes natural warmth





- Floor is used from the best natural stone
- Wall stone designed by artist in the art
- Ceiling mounted shower
- Fulse ceiling with cove lighting
- Wall mounted toilet





LAUNDRY

- Shelves in dark tone color with LED strip light
- Gray door shutter with soft close hydrolic hinges
- Marble finish wall



WASHROOM



- Onyx wall with LED light inside
- Wooden wall covering
- Ledge wall system watercloset
- Wall mounted toilet



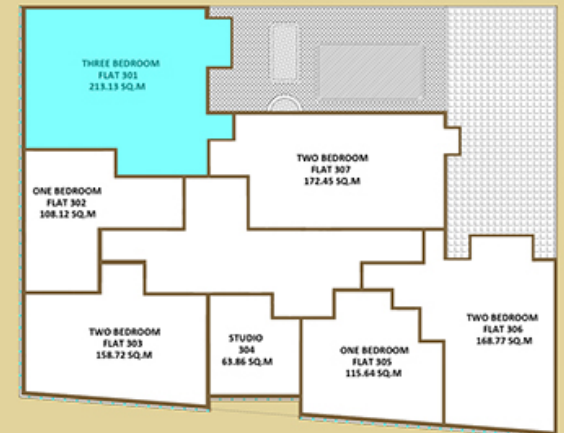


Floor Plans

3 BEDROOMS -TYPE A



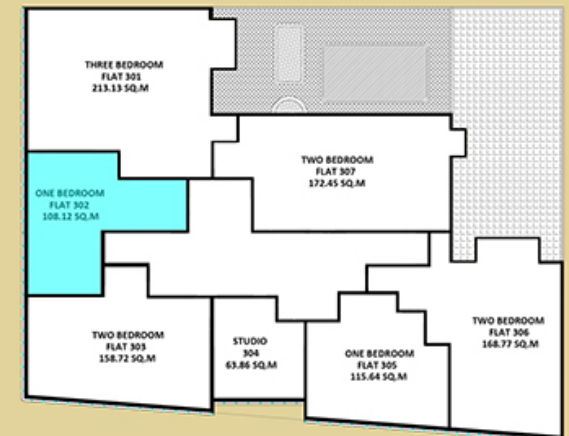
3 Master Bedrooms
 Net area: 213.13 sq.m
 2294 sq.ft



1 BEDROOM - TYPE A



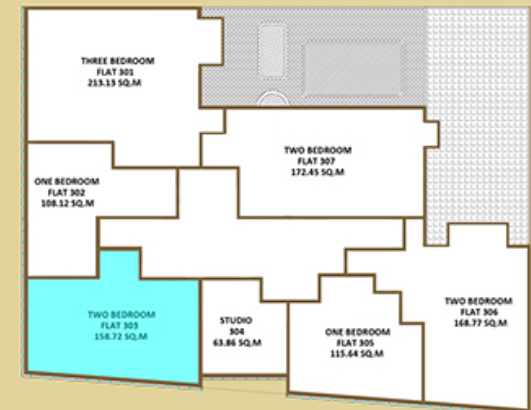
1 Master Bedroom
Net area: 108.12 sq.m
1163 sq.ft



2 BEDROOMS TYPE A



2 Master Bedroom
 Net area: 158.72 sq.m
 1708 sq.ft



STUDIO - TYPE A

5.23

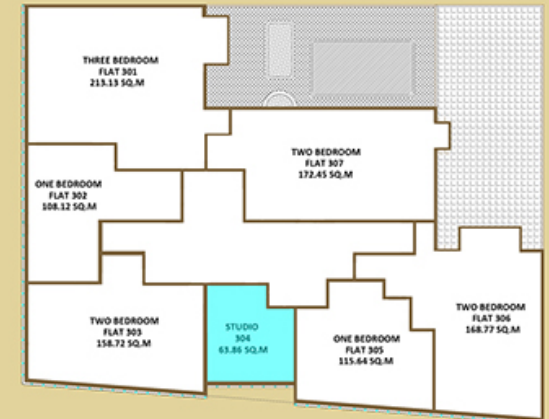


7.50

Studio

Net area: 63.86 sq.m

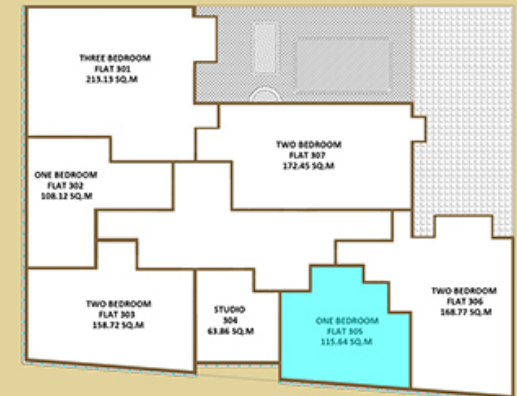
687 sq.ft



1 BEDROOM - TYPE A



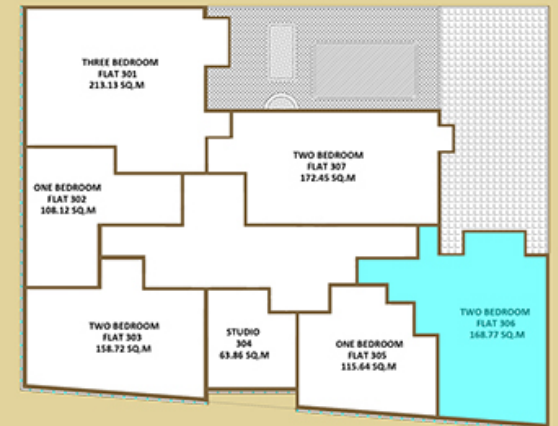
1 Master Bedroom
Net area: 115.64sq.m
1244 sq.ft



2 BEDROOMS -TYPE A



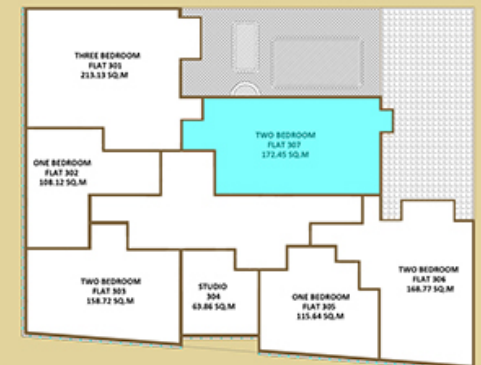
2 Master Bedrooms
 Net area: 168.77 sq.m
 1816 sq.ft

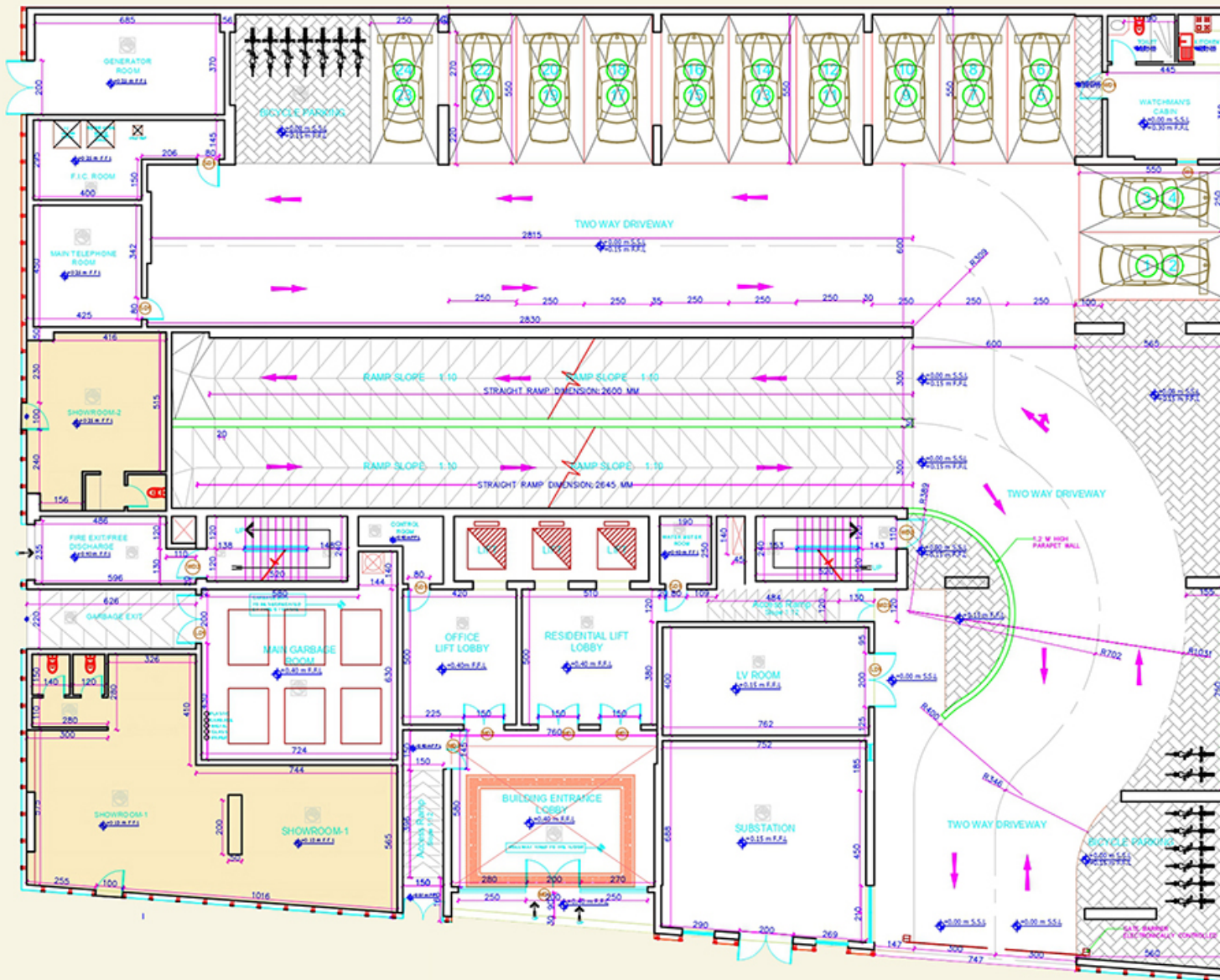


2 BEDROOMS - TYPE A

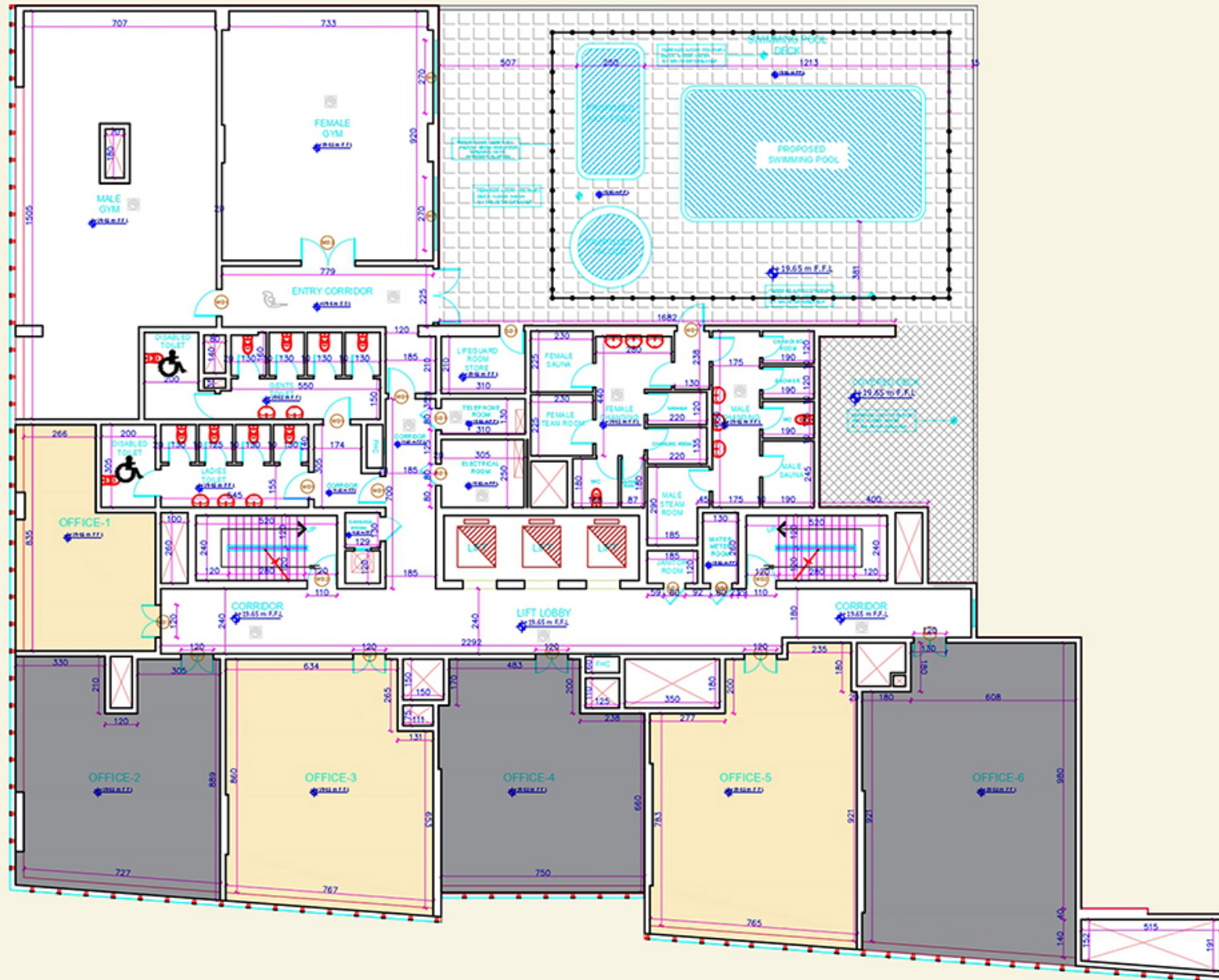


2 master Bedrooms
Net area: 172.45 sq.m
1855 sq.ft

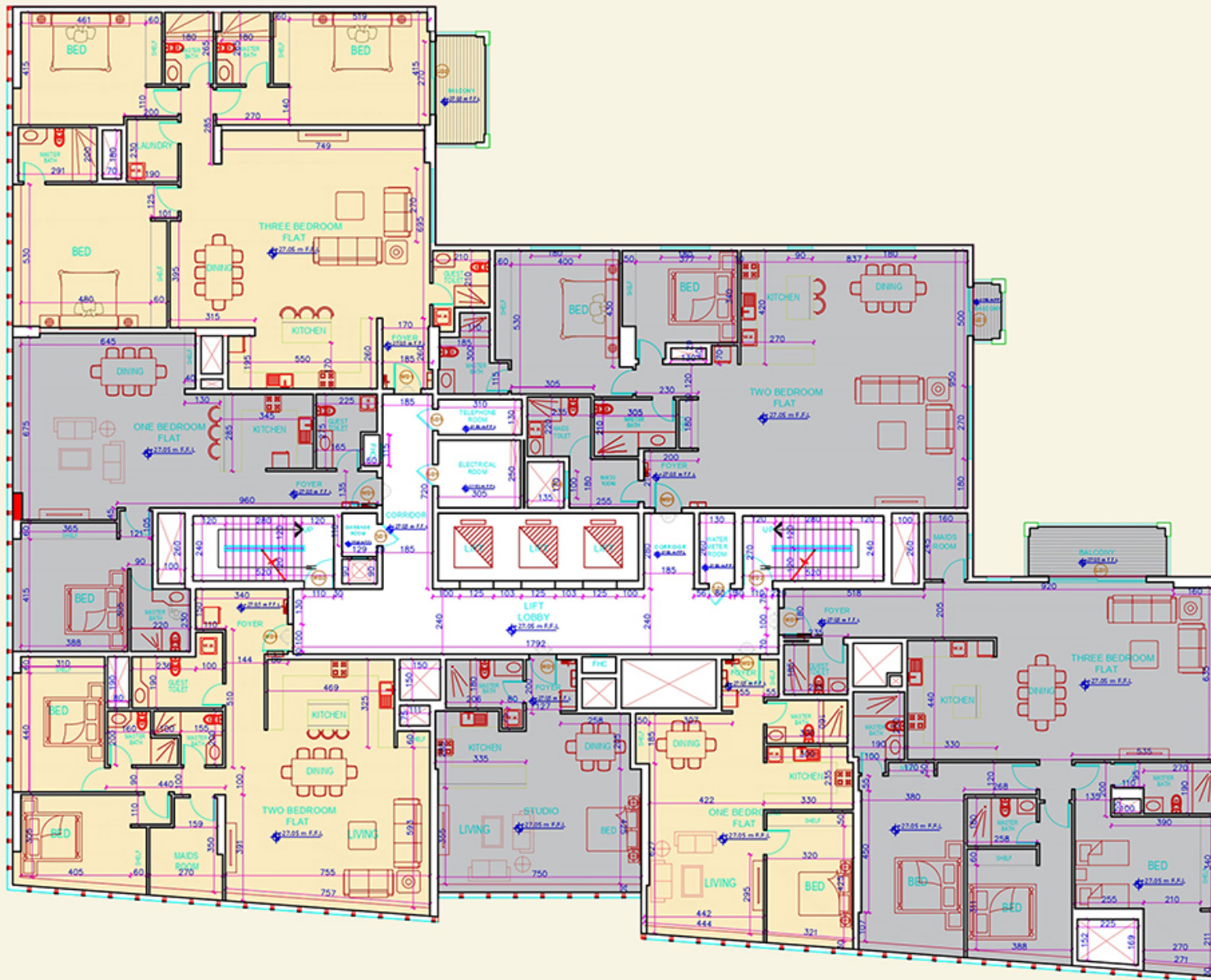




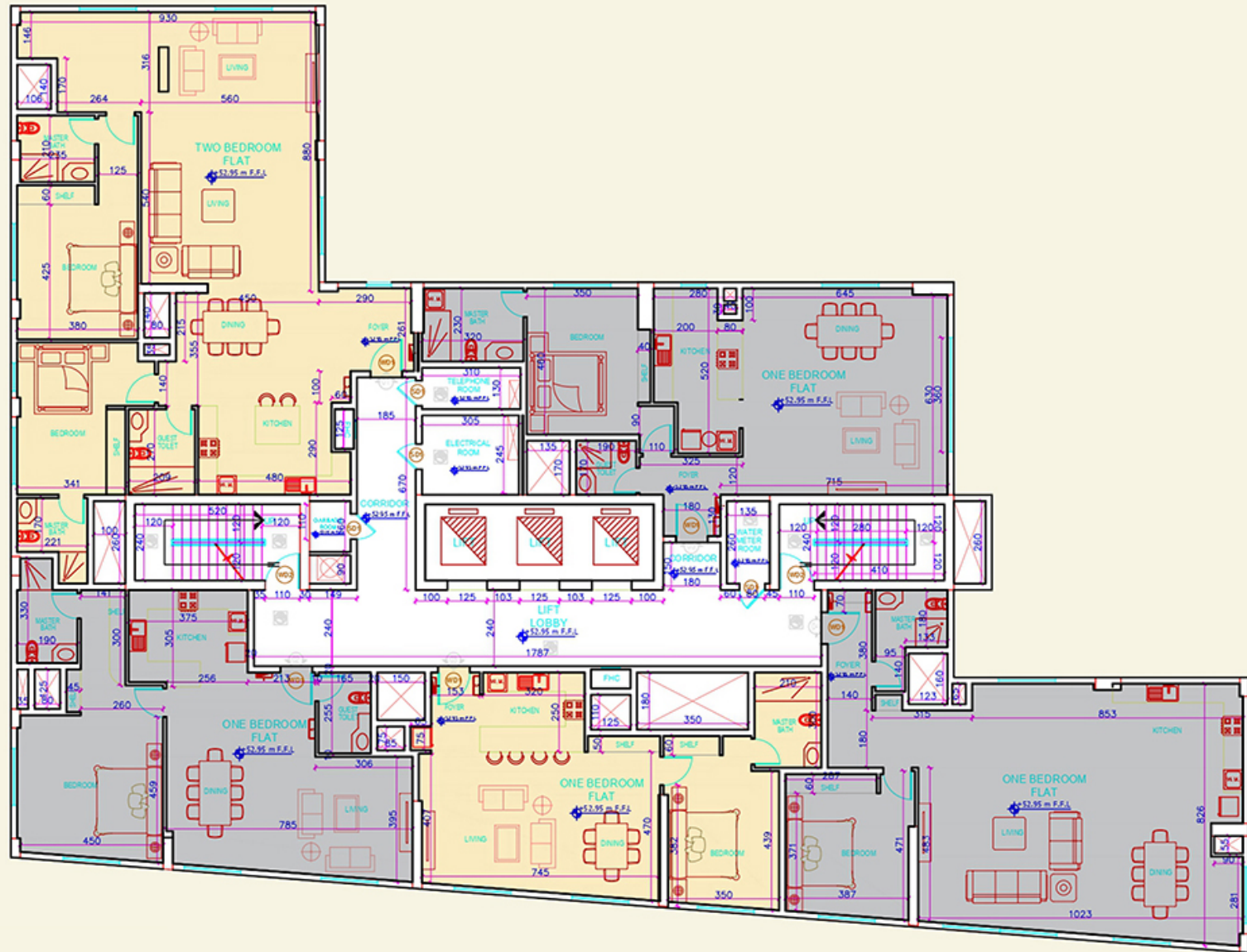
Ground floor(shops)



1st-2nd floor



4th-7th floor



11th floor